

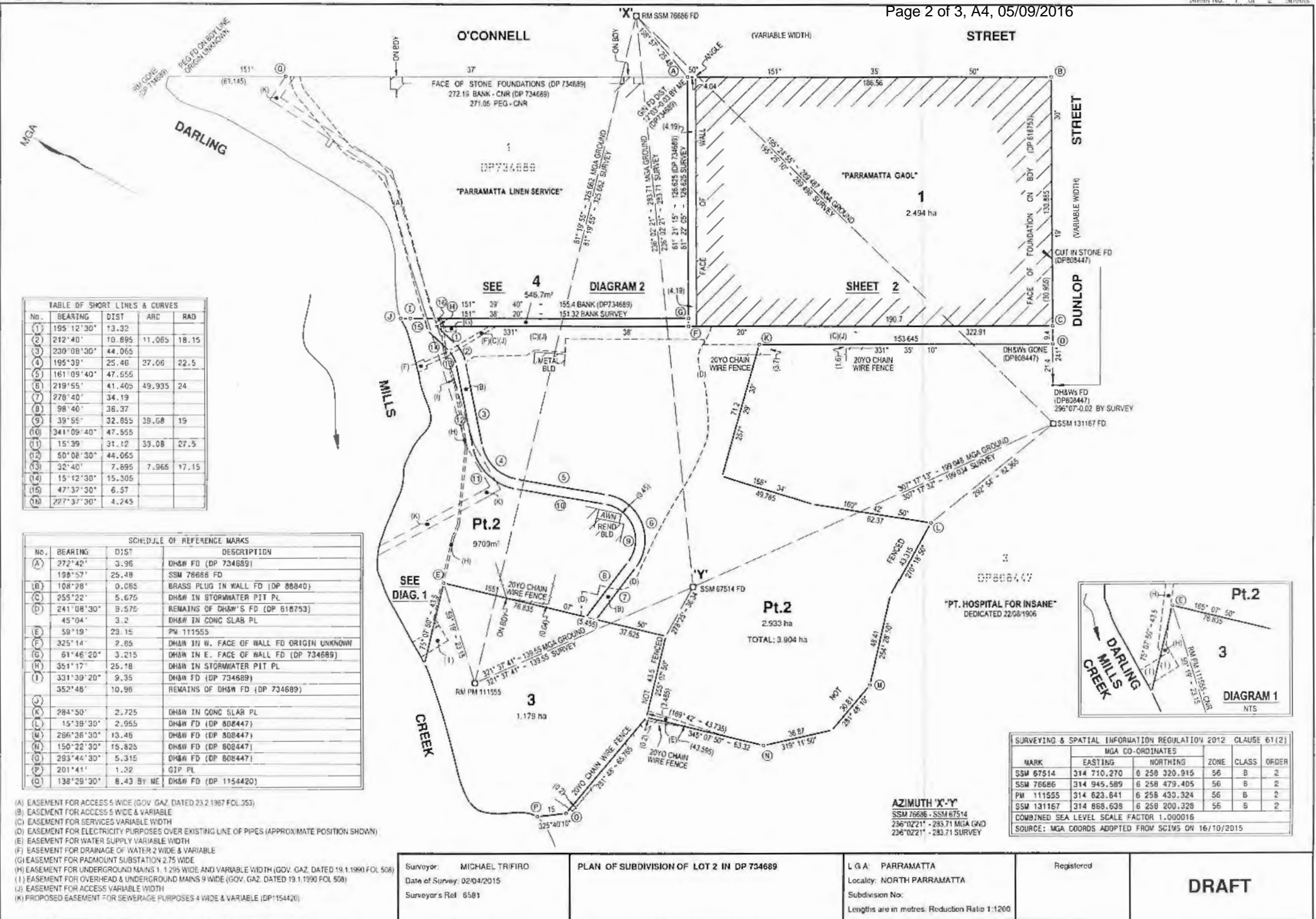


“Attachment A2”

Draft plan of subdivision of Lot 2 in DP 734689

PLAN FORM 2

WARNING: CREASING OR FOLDING WILL LEAD TO REJECTION



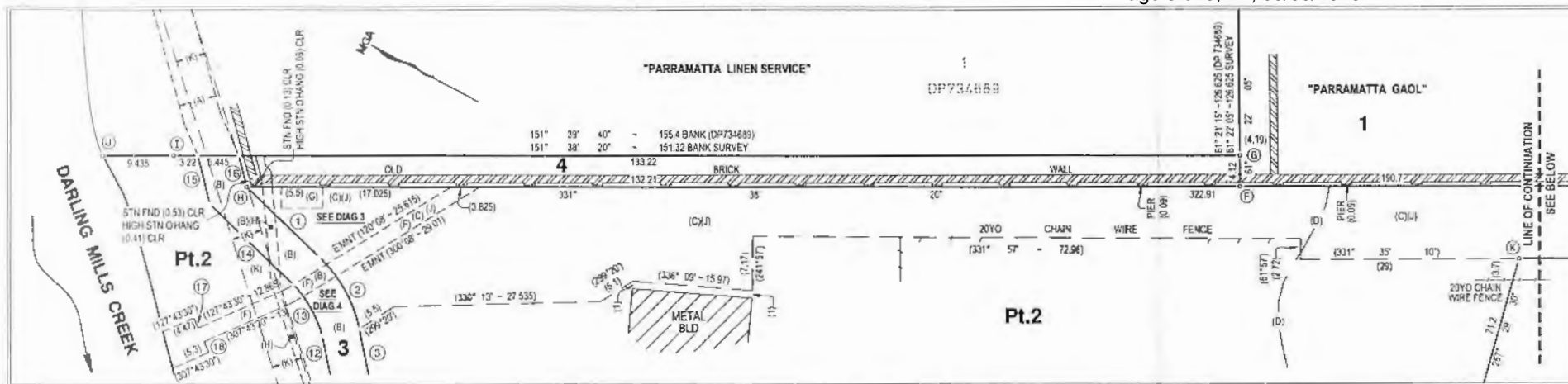


DIAGRAM 2 RR 1:400

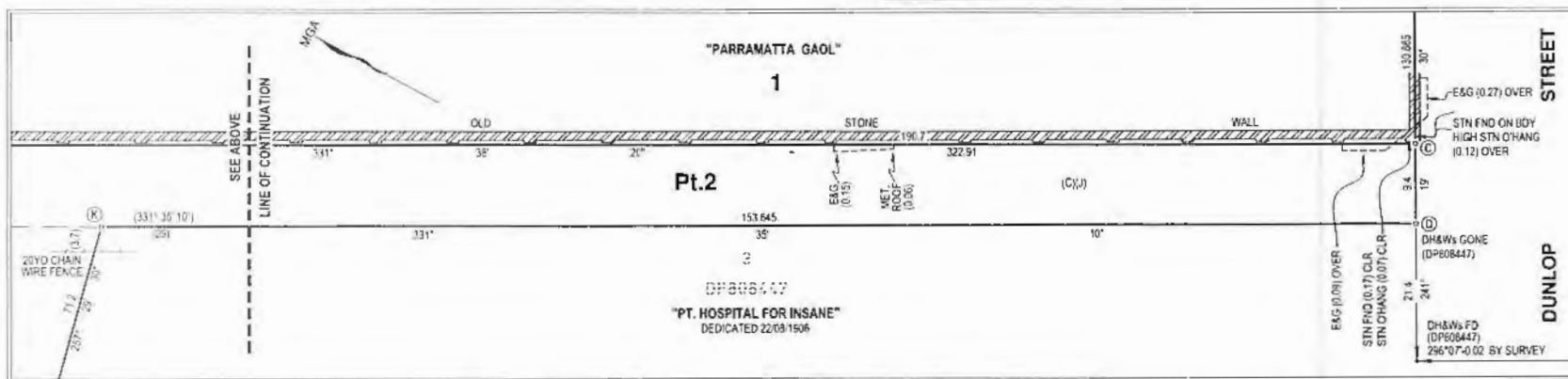


DIAGRAM 2 RR 1:400 - CONTINUATION

No.	BEARING	DIST	ARC	RAD
(1)	195°12'30"	13.32		
(2)	212°40'	10.895	11.085	18.15
(3)	230°08'30"	44.065		
(12)	50°08'30"	44.065		
(13)	32°40'	7.895	7.985	17.15
(14)	15°12'30"	15.305		
(15)	47°37'30"	8.57		
(16)	227°37'30"	4.245		
(17)	217°43'30"	1.45		
(18)	217°43'30"	1.55		

No.	BEARING	DIST	DESCRIPTION
(C)	255°22'	5.675	DH&W IN STORMWATER PIT PL
(D)	241°08'30"	9.575	REMAINS OF DH&W'S FD (DP 618753)
(E)	45°04'	3.2	DH&W IN CONC SLAB PL
(F)	325°14'	2.85	DH&W IN W. FACE OF WALL FD ORIGIN UNKNOWN
(G)	61°46'20"	3.215	DH&W IN E. FACE OF WALL FD (DP 734689)
(H)	351°17'	25.18	DH&W IN STORMWATER PIT PL
(I)	331°39'20"	9.35	DH&W FD (DP 734689)
(J)	352°48'	10.98	REMAINS OF DH&W FD (DP 734689)
(K)	284°50'	2.725	R/W DH&W IN CONC SLAB PL

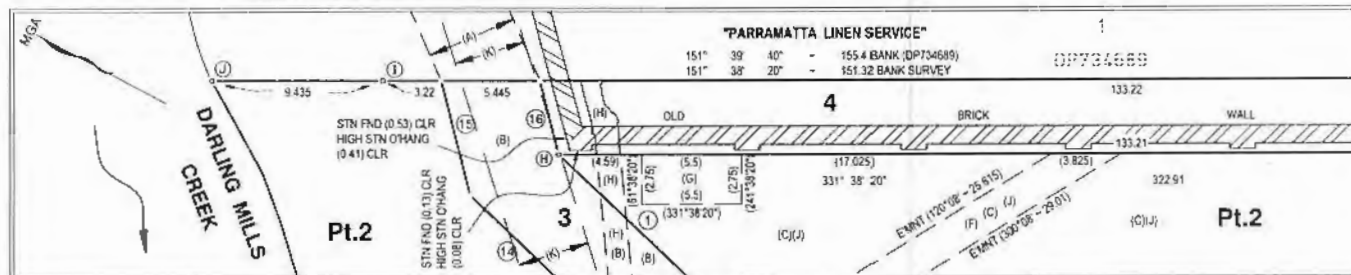


DIAGRAM 3 RR 1:200

EASEMENTS:

- (A) EASEMENT FOR ACCESS 5 WIDE (GOV. GAZ. DATED 23 2 1987 FOL 353)
 (B) EASEMENT FOR ACCESS 5 WIDE & VARIABLE
 (C) EASEMENT FOR SERVICES VARIABLE WIDTH
 (D) EASEMENT FOR ELECTRICITY PURPOSES OVER EXISTING LINE OF PIPES (APPROXIMATE POSITION SHOWN)
 (E) EASEMENT FOR DRAINAGE OF WATER 2 WIDE & VARIABLE

EASEMENTS (CONT.):

- (G) EASEMENT FOR PADMOUNT SUBSTATION 2.75 WIDE
 (H) EASEMENT FOR UNDERGROUND MAINS 1, 2.295 WIDE AND VARIABLE WIDTH (GOV. GAZ. DATED 19 1 1990 FOL 508)
 (J) EASEMENT FOR ACCESS VARIABLE WIDTH
 (K) PROPOSED EASEMENT FOR SEWERAGE PURPOSES 4 WIDE & VARIABLE (DP1154420)

Surveyor: MICHAEL TRIFIRO
 Date of Survey: 02/04/2015
 Surveyor's Ref: 5581

PLAN OF SUBDIVISION OF LOT 2 IN DP 734689

LGA: PARRAMATTA
 Locality: NORTH PARRAMATTA
 Subdivision No:
 Lengths are in metres. Reduction Ratio
 AS SHOWN

Registered

DRAFT